



Charging Holder with USB Cigarette Lighter Plug

Part #521821

\$139.99

Always keep your battery fully charged with this high quality custom made cradle. This Cradle is made to fit the tablet without a case. It is high quality custom with a neat and discreet design. Easily snap your device in and out of the cradle. No more fumbling around for your device in the cup cradle or passenger seat. Provides for safer driving when viewing, accessing and operating your device in the vehicle.

Features

Always keep your battery fully charged with this high quality custom made cradle. This Cradle is made to fit the tablet without a case. It is high quality custom with a neat and discreet design. Easily snap your device in and out of the cradle.

- Custom fit to your bare device
- Shock absorbing cradle designed to protect the tablet in case of minor bumps and drops
- Includes Tilt-Swivel to angle cradle 15 degrees any direction
- Rotate between portrait and landscape view

Compatibility

- Samsung Galaxy Tab E 9.6

Specifications

Power Specs:

- USB cable with 12 V power plug included
- USB cable permanently attached to cradle
- Cord length is 39 inch / 99 cm
- Works in any 12 V vehicle power outlet
- Provides up to 10 Watts (2.1A) charging power
- Power plug converts from 12 V to 5 V output
- LED illuminated power indicator

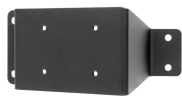
Image Gallery



Mounting Options



Pedestal Mounts



Custom Vehicle Mounts



Forklift Mounts