



Non-Charging Cradle - Bare Device

Part #510883

\$204.99

This cradle is custom fit to the bare tablet without Rugged Frame or Holster Case

This cradle is machined from ABS and Acetal polymers and features AMPS and 75mm VESA hole patterns for easy attachment to vehicles, work carts or flat surfaces.

Features

- Custom fit to bare tablet without Rugged Frame or Holster Case.
- Cradle only, does not include charging capability.
- Industry Standard AMPS Hole Pattern for Mounting

Compatibility

- Aava Mobile oona 10
- Pepperl Fuchs Tab-IND 10
- Zebra ET50/51/55/56 10.1

Specifications

What's Included:

- M4 Fastener Pack
 - 10, 14, and 20 mm Low Profile 2.5 mm Hex
 - M4 Lock Nuts, Flat Washers, Lock Washers
 - 2.5mm Allen Wrench

Accessories: See Available Options

Recommended Parts: ProClip Standard Duty Mounts with a Back Plate for vehicles or Heavy-Duty Mounts for Forklifts.

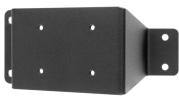
Image Gallery



Mounting Options



Pedestal Mounts



Custom Vehicle Mounts



Forklift Mounts