



## Charging Holder with Cigarette Lighter Adapter, Fits Scanner Module

Part #712182

**\$139.99**

Avoid cables over your dashboard and always keep your battery fully charged with this high quality custom made cradle. This is designed to accommodate the tablet while the scanner module is installed.

A straight power cable is permanently attached to this Cradle creating a dock type connection for your device. When your device is slid into the cradle it connects to the cable plug. Due to the straight cable you can easily hard wire it behind the dashboard. The Cradle angles 15 degrees for optimal viewing. Easily slide your device in/out of the cradle. No more fumbling around for your device. Provides for safer driving when viewing, accessing and operating your device in your vehicle.

### Features

Always keep your battery fully charged with this high quality custom made cradle. With a neat and discreet design, and a cigarette lighter cable that is permanently attached this cradle is the perfect option to mount your tablet.

- Custom fit to your bare device
- Fits tablet with scanner module installed
- Includes tilt-swivel to angle cradle 15 degrees any direction
- Rotate between portrait and landscape view
- Includes Charging Cord for Hard-Wired Install

### Specifications

#### Power Specs:

- Modular power cable attached to cradle
- Provides up to 15 Watts (3A) charging power
- Works in 12 / 24 V vehicle power outlets
- Power plug converts from 12/24V to 5.4V output
- LED illuminated power indicator

### Compatibility

- Panasonic FZ-L1
- Panasonic FZ-L1

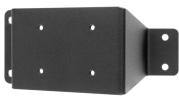
# Image Gallery



# Mounting Options



Pedestal Mounts



Custom Vehicle Mounts



Forklift Mounts