



## Heavy-Duty Forklift Mount, 8 In. Arm, 3.375 x 5.125 In. Clamp

Part #215890

**\$224.99**

Perfect for use with all types of forklifts. It will keep everything in plain sight when you need it and out of the way when you don't. Attach a device holder to the included pedestal and you are all set to go.

### Features

- Solid-core aluminum for exceptional strength
- Smaller teeth than our super-duty pedestals for more adjustment options
- The forklift mount can be mounted on square surfaces, perfect for forklift cages
- Not compatible with ProClip Super-Duty pedestals

### Specifications

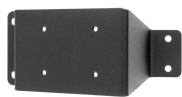
- Color: Black
- Material: Aluminum
- Pedestal has a 90 degree offset to allow more adjustment options
- Round base plates with multiple AMPS mounting positions
- Comes with complete set of screws in various sizes, allowing for the forklift mount to span from 130 mm to 5 mm

### Compatibility

## Mounting Options



Pedestal Mounts



Custom Vehicle Mounts



Forklift Mounts