



## Non-Charging Cradle for Zebra ET80/ET85 with Rugged Boot

Part #710301

**\$189.99**



This cradle is custom fit to the Zebra ET80 series of tablets without the keyboard case. It includes a fixed top support that prevents the tablet from being removed when installed. This is intended to let the tablet be used in a kiosk mode where all the buttons are available, but it cannot be removed.

This cradle features the AMPS and 75mm VESA hole patterns for easy attachment to vehicles, work carts or flat surfaces. It also has additional holes to enable cables to be managed with the included zip ties to ensure a clean and safe installation. A pack of M4 fasteners is included with various lengths, washers and lock nuts to provide multiple options for mounting the cradle.

### Features

- Fits the Zebra ET8x without the Keyboard Cover
- Includes AMPS and VESA 75MM Mounting Holes and Cable Tie Holes
- Durable Side Supports and Docking Base made from Acetal Plastic
- Top Support Prevents Tablet Removal when Installed
- Recommended with ProClip Standard Duty Mounts with a Back Plate for vehicles or Heavy-Duty Mounts for Forklifts.
- M4 Fastener Pack
  - 10, 14 and 20 mm Low Profile 2.5 mm Hex
  - M4 Lock Nuts, Flat Washers, Lock Washers
  - 2.5mm Allen Wrench

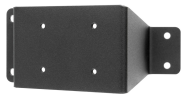
### Compatibility

- Zebra ET80 / ET85

# Mounting Options



Pedestal Mounts



Custom Vehicle Mounts



Forklift Mounts