



Non-Charging Cradle with Key Lock for Zebra ET80/ET85 with Rugged Boot

Part #739296

\$304.99



The cradle is designed to fit all of the configurations of ET80 Expansion Back accessories in one solution. Regardless of having just the tablet or any combination of the Expansion Back, Barcode Scanner, Hand Strap or Spare Battery, your specific combination will fit in this cradle. The folding keyboard cover is not supported.

This cradle features a steel base plate that has the AMPS and 75mm VESA hole patterns for easy attachment to vehicles, work carts or flat surfaces. It also has additional holes to enable cables to be managed with the included zip ties to ensure a clean and safe installation. The included Key Lock block comes with a standard key to make it easy to manage a large fleet of cradles without having to track individual keys.

The scanner can function through the scan window on the top of the cradle while docked and locked in place. This cradle features a slot for the Hot-Swap battery so it can be changed while docked.

Features

- Fits the Zebra ET8x without the Keyboard Cover
- Fits Expansion Back with Barcode Scanner
- Scanner Accessible while Docked
- Hot-Swap Battery Access While Docked
- Key Lock with 2 Keys
- Steel Base Plate with AMPS and VESA 75MM Mounting Holes and Cable Tie Holes
- Durable Side Supports, Top Supports, and Docking Base made from Acetal Plastic
- ABS Backplate is Flexible and Durable
- Recommended with ProClip Standard Duty Mounts with a Back Plate for vehicles.
- M4 Fastener Pack
 - 10, 14 and 20 mm Low Profile 2.5 mm Hex
 - M4 Lock Nuts, Flat Washers, Lock Washers
 - 2.5mm Allen Wrench

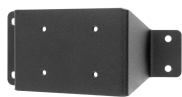
Compatibility

- Zebra ET80 / ET85

Mounting Options



Pedestal Mounts



Custom Vehicle Mounts



Forklift Mounts