



Cig-Plug Adapter with USB-C PD and USB-A Port

Part #945031

\$44.99

Designed for ModTek and Direct USB-C Charging Cradles.

This simple, low-profile cigarette car charger adapter allows you to get full charging speeds with two devices at the same time.

Port 1 is USB-C and supports device charging at up to 18 watts. Port 2 is USB-A with Qualcomm Quick Charge 3.0 and supports device charging at up to 18 watts.

This is the best way to maximize different charging needs in your car.

Charging speed and power depend on your device. QC 3.0 support required for full speed on port 2.

Features

- Cigarette Lighter Adapter
- USB-C PD and USB-A with USB-C to USB-C Cable (1.5 Meters)
- Input: 12-24 VDC
- Up to 36 Watts Combined

Specifications

- Input:
 - 12-24 VDC
 - 3A Maximum
- Output (36W Combined Max):
 - Port 1 (USB-C): 5V?3A | 9V?2A | 12V?1.5A
 - Port 2 (USB-A): 3.6-6V?3A | 6.2-9V?2A | 9.2-12V?1.5A

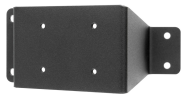
Compatibility

- Zebra ET40/ET45 10"
- Zebra ET40/ET45 8"
- Zebra ET50/51/55/56 10.1
- Zebra ET50/51/55/56 8.3 and 8.4
- Zebra ET51 8.4" with 1D/2D Barcode Scanner
- Zebra ET60/ET65

Mounting Options



Pedestal Mounts



Custom Vehicle Mounts



Forklift Mounts